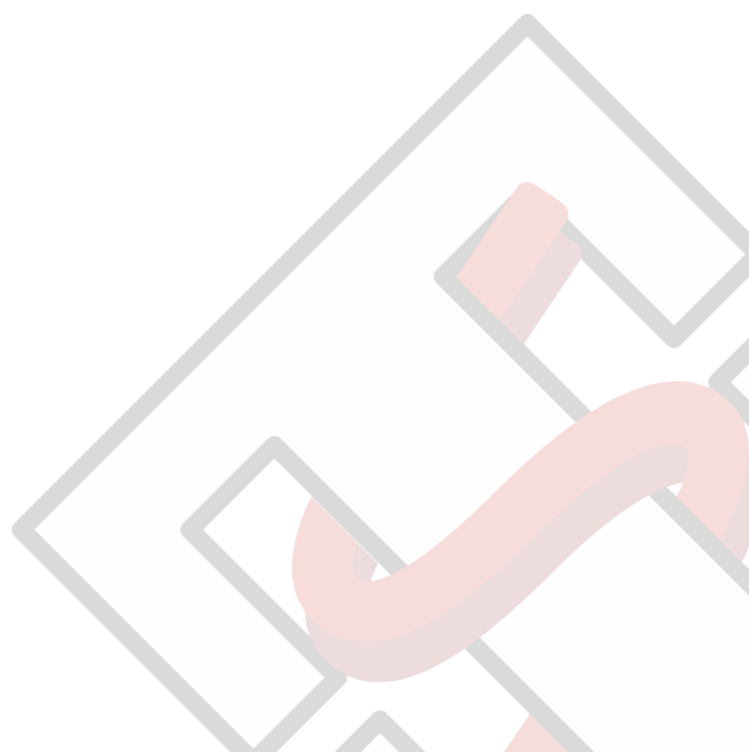




# Installation guide

May 2025



# Contents

---

<b>Installation .....</b>	<b>2</b>
License .....	5
Troubleshooting.....	5



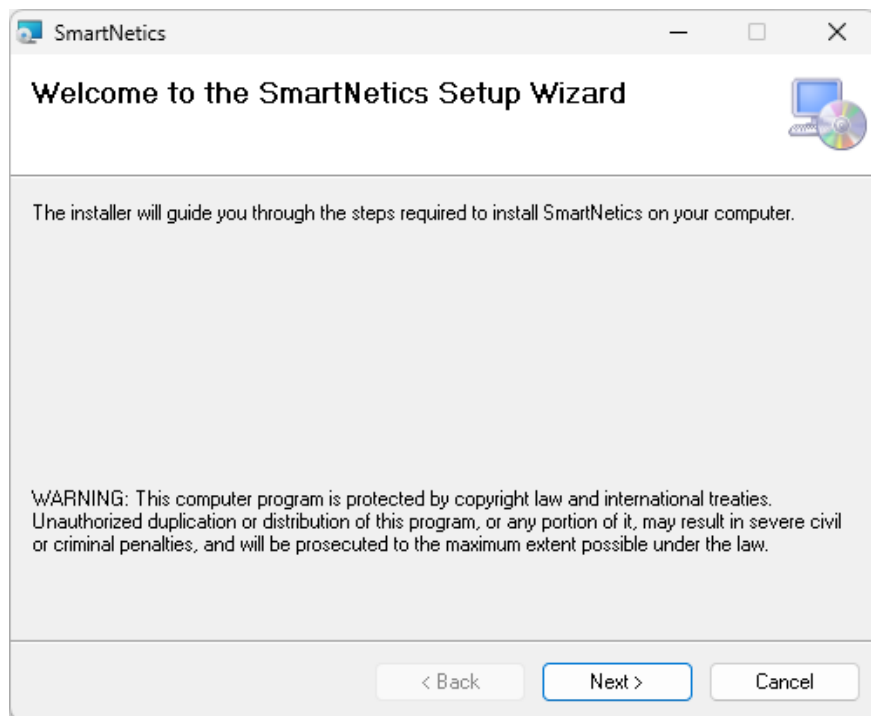
---

# Installation

---

Once the user launches the installer (SmartNetics\_2025.1\_x64.msi, which can be downloaded from [our website](#)), the Setup Wizard can guide them in the required steps.

The first dialog to appear is a welcome one, and the user needs to press “Next” to proceed with the installation, as shown in Figure 1.



**Figure 1:** Welcome dialog

In the next dialog the user can read the license agreement. If they agree with it, they can check the “I agree” option and proceed with the “Next” steps, as shown in the next figure.



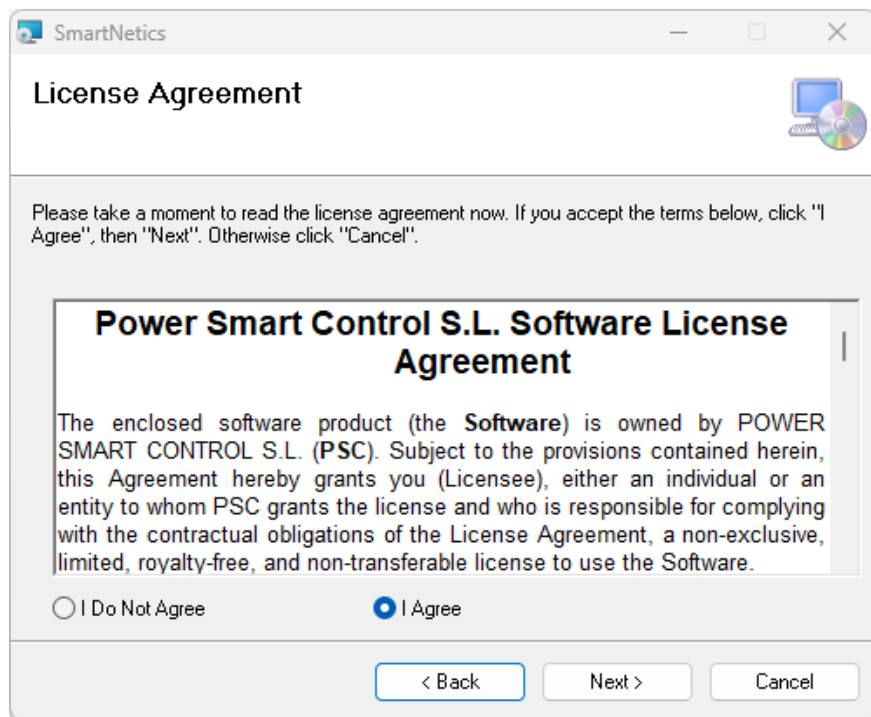


Figure 2: License agreement dialog

In the third dialog the user can select the installation folder for SmartNetics. By default "C:\PowerSmartControl\SmartNetics\_2025.1\" is selected, as shown in Figure 3, but the user can select the one that best suits their needs. The license file is going to be moved to this installation folder later, so the user is encouraged to select a folder in which they have administrator privilege to modify them.

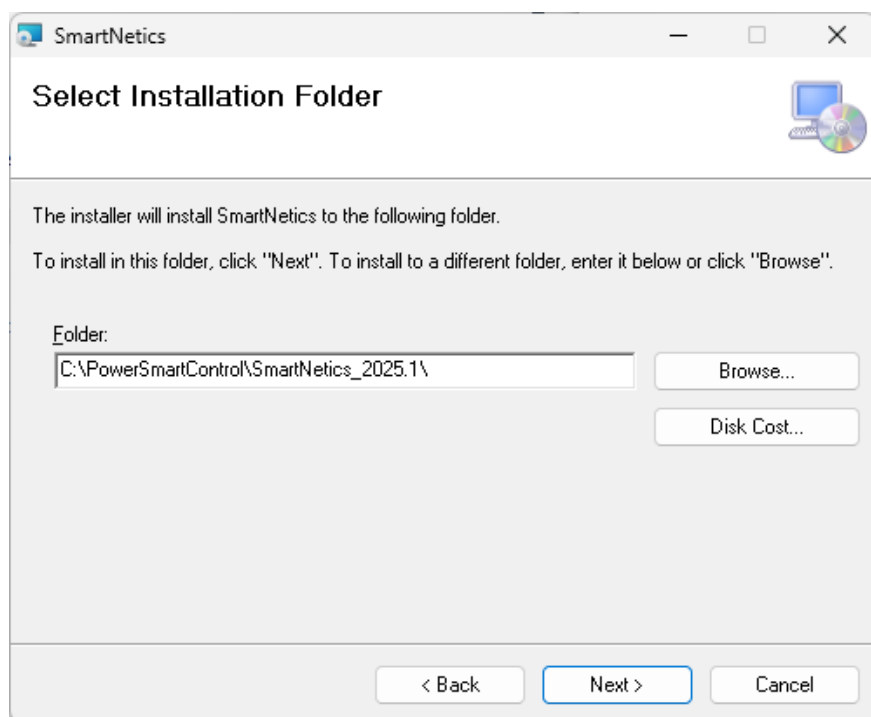
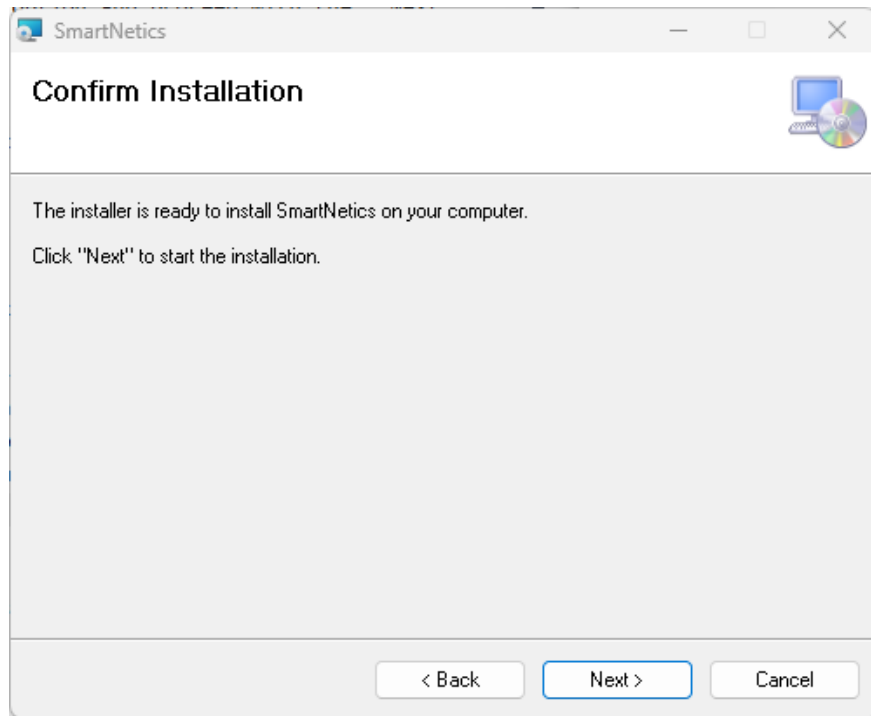


Figure 3: Installation folder dialog

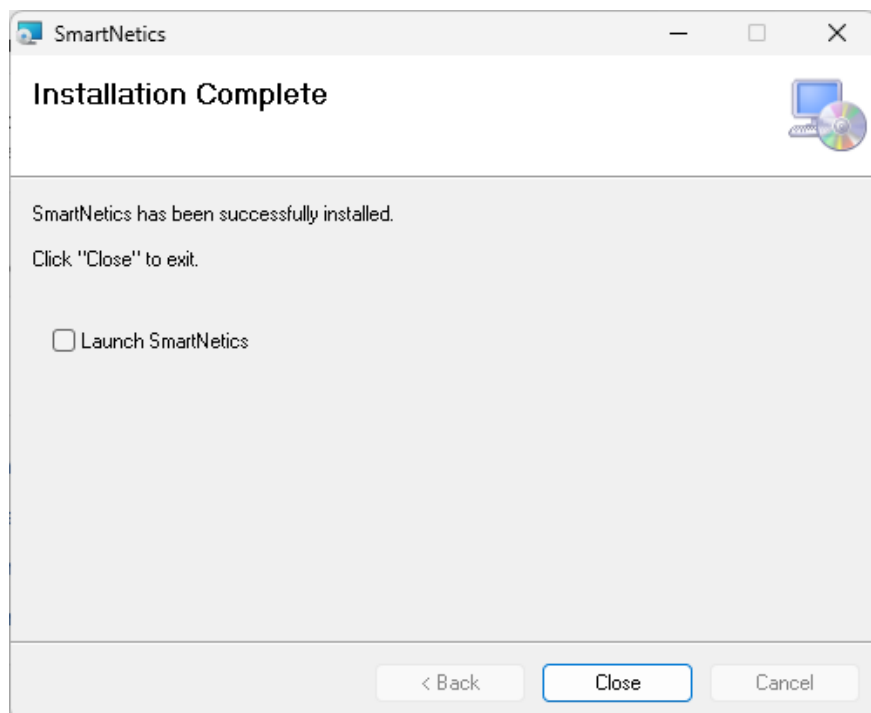


After clicking on “Next”, the confirmation dialog (shown in Figure 4) appears. The user can go back to review the previous steps or click on “Next” to proceed with the installation.



**Figure 4:** Installation confirmation dialog

Once the installation completes, the last dialog “Installation complete” is displayed. The user can select whether to automatically launch SmartNetics or not and the press “Close” to exit the installer.



**Figure 5:** Installation complete dialog



## License

Once the software is installed, the user must move the license file “SmartNetics.lic” provided by Power Smart Control to the same folder the tool has been installed at (“C:\PowerSmartControl\SmartNetics\_2025.1\” by default).

## Troubleshooting

In some machines, the screen scaling may be different from 100%, which may affect how SmartNetics is displayed. In case this becomes an issue, the user can modify the screen scaling by right-clicking on any part of the desktop and selecting “Display settings”, as shown in the next figure:

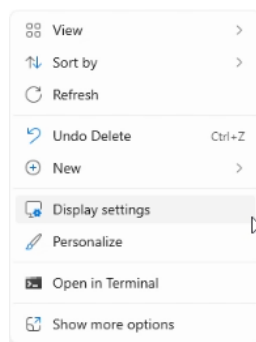


Figure 6: Display settings

When doing so, the next configuration window is displayed and the user can modify the screen scale, as shown highlighted in green in Figure 7.

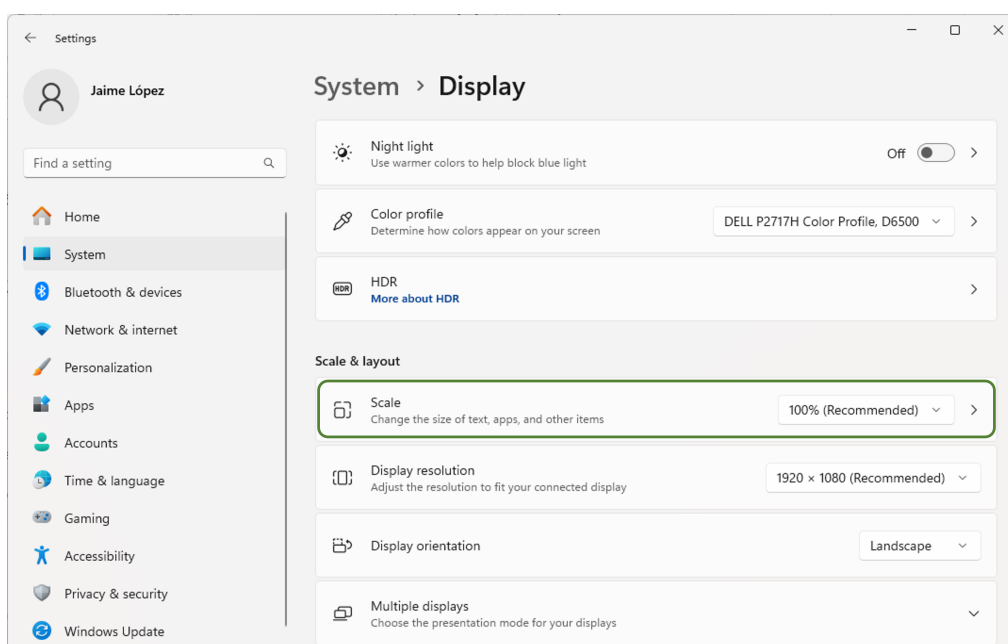


Figure 7: Screen scale configuration

