



smart
ctrl

control design for power electronics

SmartCtrl Installation Guide

January 2022



SmartCtrl Installation Guide

January 2022

How to Contact:

 sales@powersmartcontrol.com

 www.powersmartcontrol.com

Installing SmartCtrl

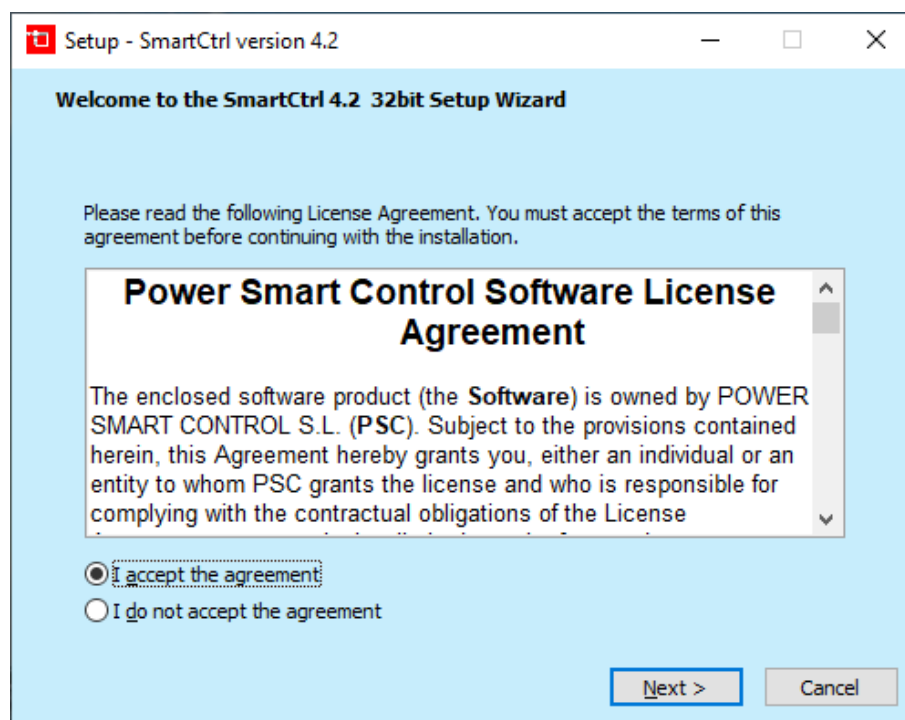
To install SmartCtrl, you must have the system administrative privilege, or ask your system administrator to perform the installation.

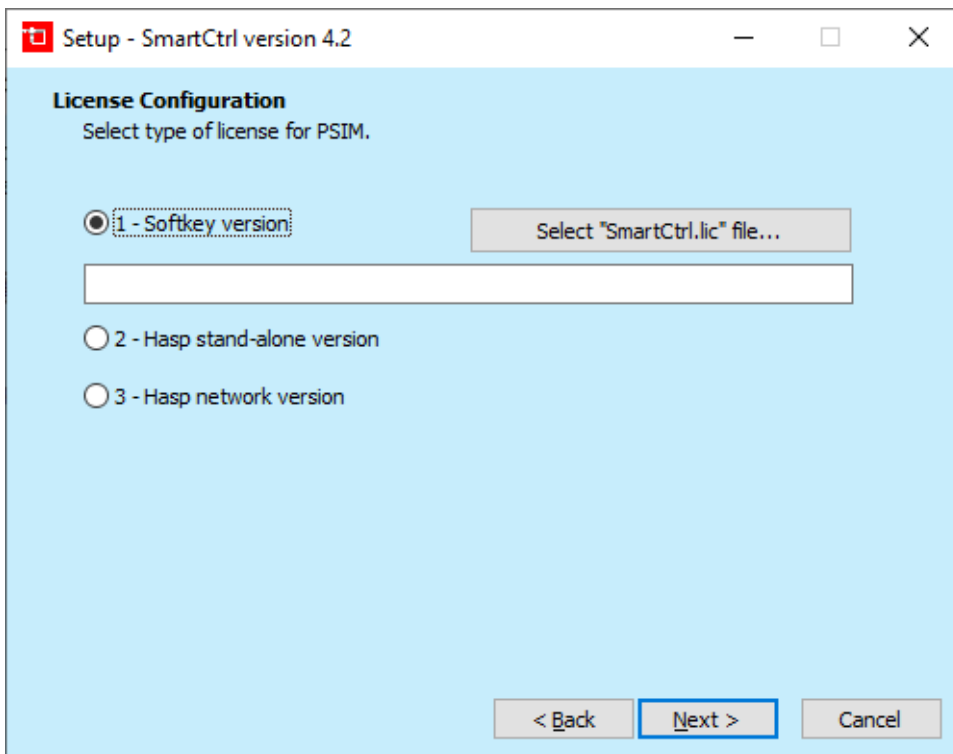
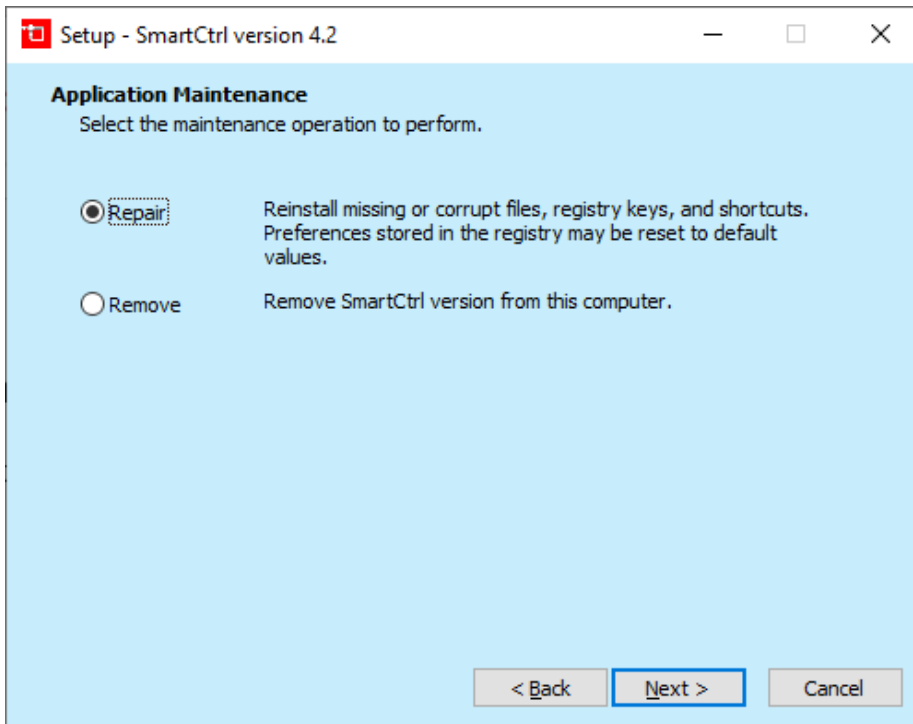
1. If your license is a hasp stand-alone version, connect the hasp key to the computer.
If the license is a hasp network version, make sure that the hasp network key is connected to the server computer and is set up properly. For more details on how to set up the hasp network key, refer to "PSIM Installation Guide (hasp network.pdf)".

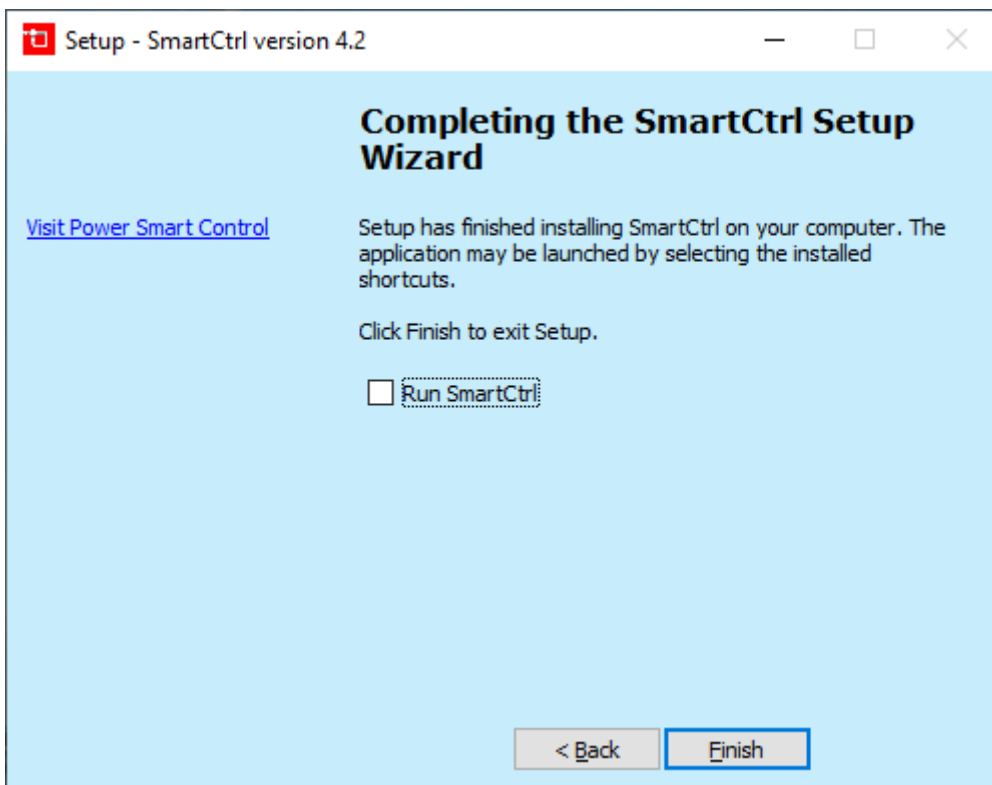
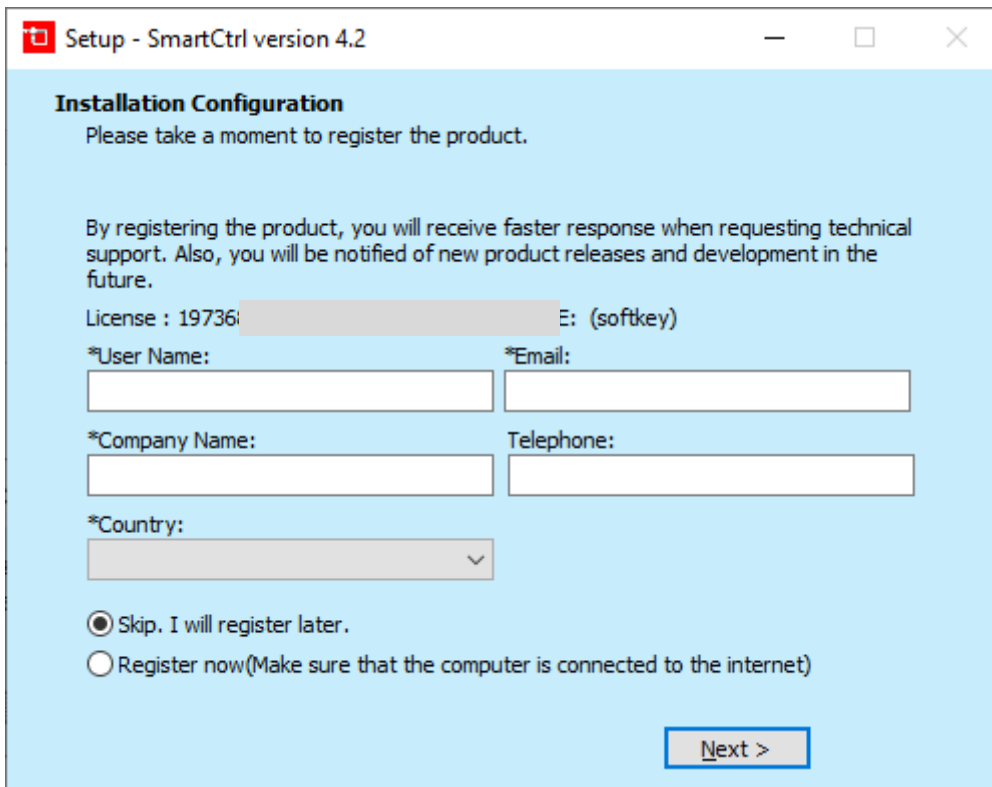
<https://powersimtech.com/installation/>

If the license is a softkey version, make sure that you have the SmartCtrl license file "smartctrl.lic" ready. You can find it within file "SmartCtrl.zip".

2. Run the setup file from either the installation USB key or the download link provided.
3. On the page "Select License Type", choose the correct license version: either Hasp stand-alone version, or Hasp network version, or Softkey version. If Softkey is selected, you will be prompted to browse for the license file "smartctrl.lic". Click on **Next**.
4. Choose the destination folder (the default folder will be under "C:\ SmartCtrlXXX"), and follow the instructions to finish the rest of the installation.







The SmartCtrl User Manual is available in the “**doc**” folder (or in the Help/Contents menu in SmartCtrl). In the “**examples**” folder under the SmartCtrl installation folder, there are different tutorials with complete sample files.

Running SmartCtrl

SmartCtrl can be launched directly by running “**SmartCtrl.exe**”, or from within **PSIM** by selecting **Utilities >> Launch/Export to SmartCtrl**.

In case you have any difficulties during the installation process please contact Power Smart Control support:

support@powersmartcontrol.com

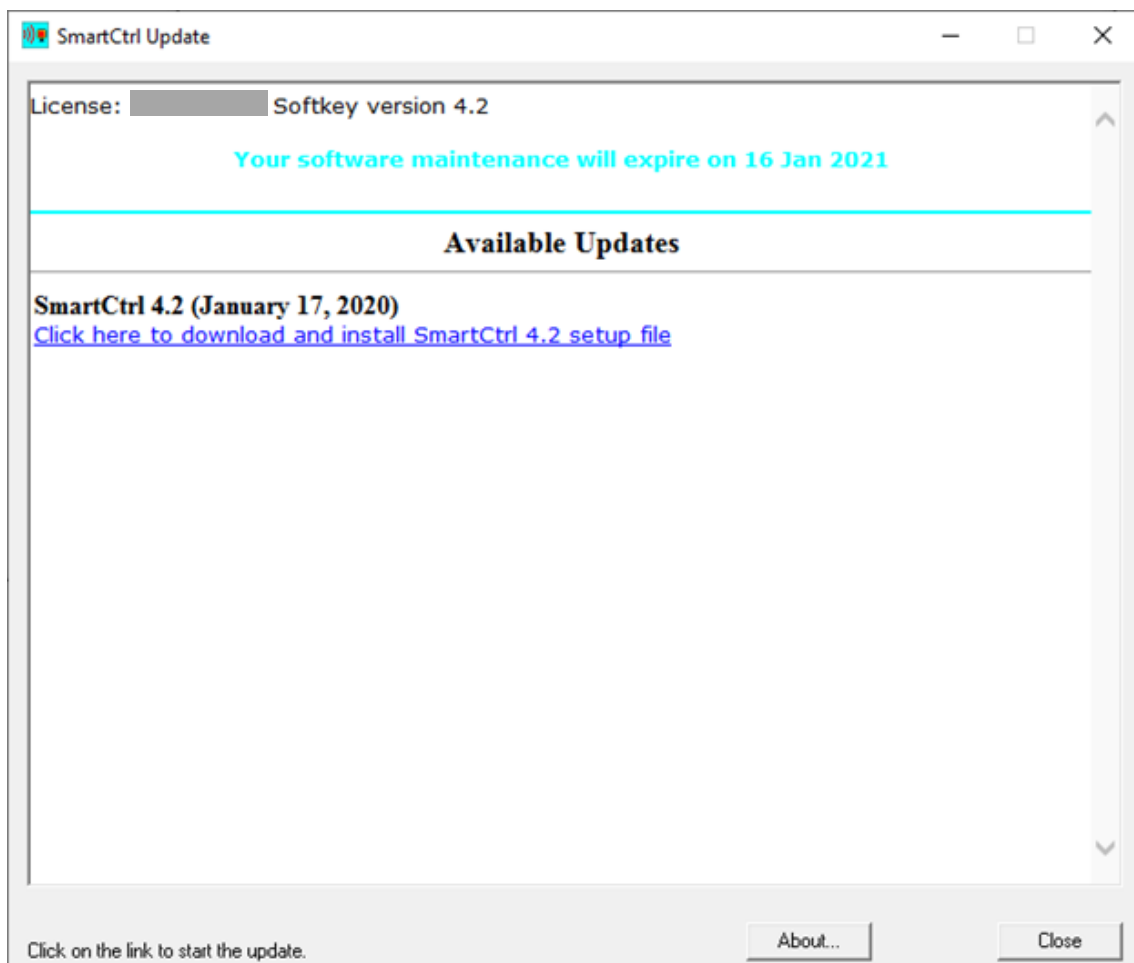
For software issues or software suggestions please contact:

development@powersmartcontrol.com

Annex

Check for updates functionality

If you already have a previous version of SmartCtrl you can select in **Options>>Check for software updates** and the system will run SmartCtrlUpdate.exe to check if there is a new software version available in case you have a maintenance contract active.



The message you will get when executing the Check for updates functionality once you have updated the software is shown below:

