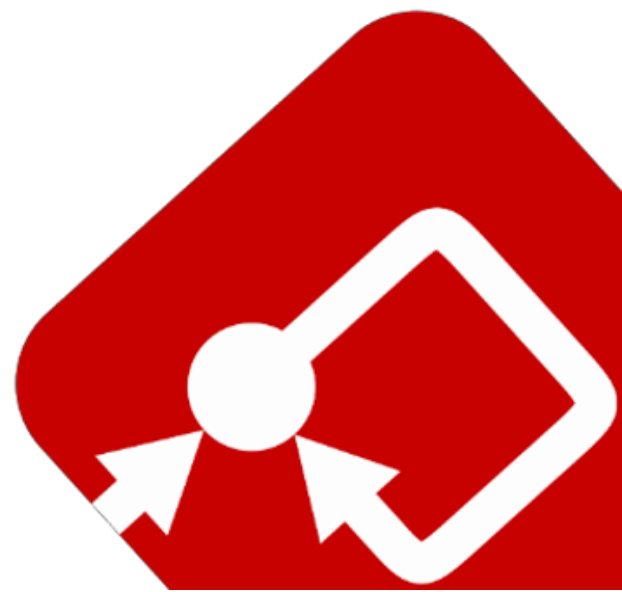


smart
ctrl

control design for power electronics

SmartCtrl Installation Guide

February 2024



SmartCtrl Installation Guide

February 2024

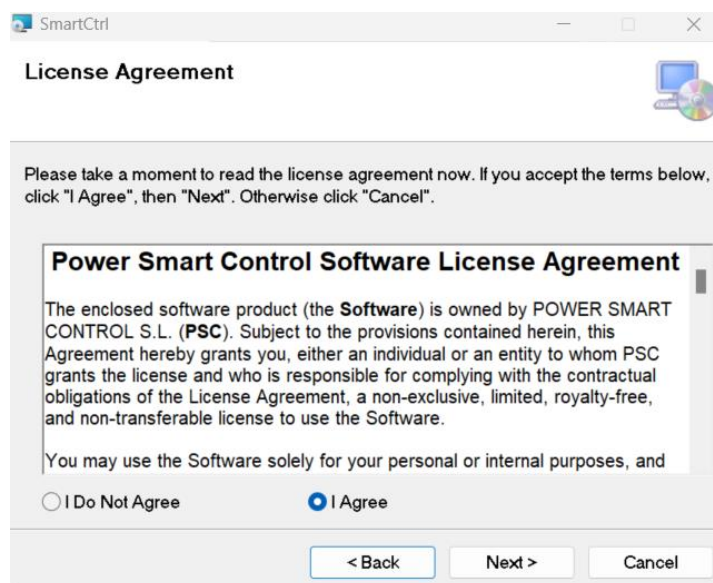
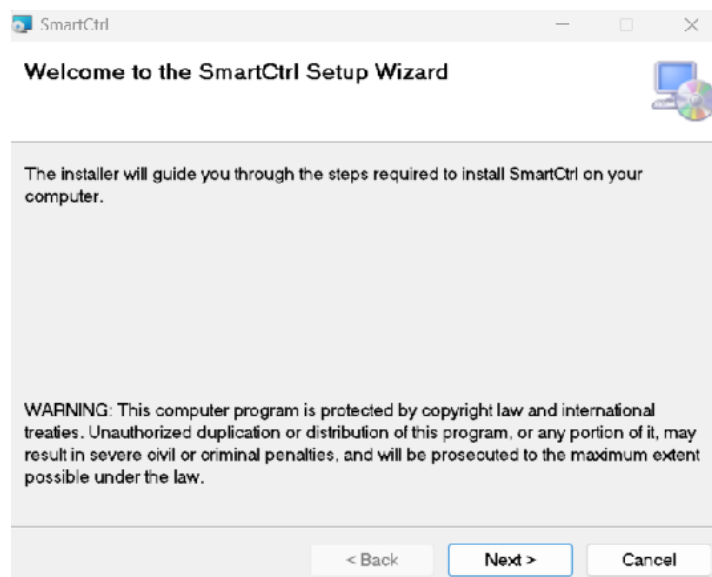
How to Contact:

 support@powersmartcontrol.com

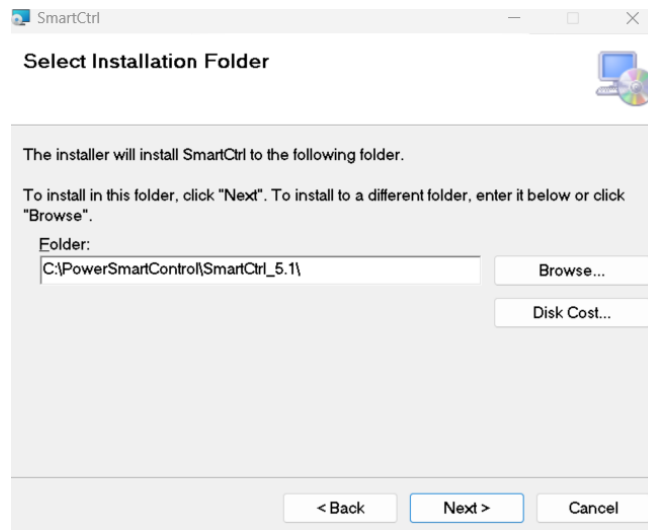
 www.powersmartcontrol.com

Installing SmartCtrl

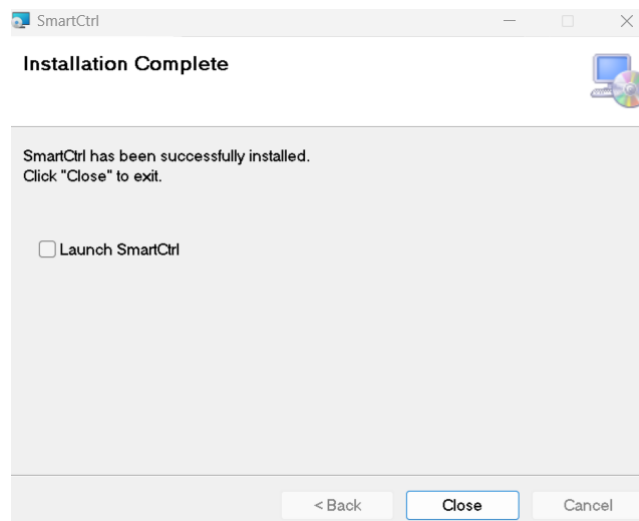
1. To install SmartCtrl, you must have the system administrative privilege, or ask your system administrator to perform the installation. Make sure that you have the SmartCtrl license file “smartctrl.lic” ready (provided by email to the SmartCtrl licenses administrator of your entity).
2. Run the setup file from the download link (provided by email to the SmartCtrl licenses administrator of your entity).
3. Follow the next steps, click on the next button, and accept the license agreement.



4. Choose the destination folder (the default folder will be under ("C:\PowerSmartControl\SmartCtrl_XXXX") and follow the instructions to finish the rest of the installation.



5. The installation is completed, you can launch SmartCtrl directly by clicking in the box.



The SmartCtrl User Manual is available in the “**doc**” folder (or in the Help/Contents menu in SmartCtrl). In the “**examples**” folder under the SmartCtrl installation folder, there are different tutorials with complete sample files.

Running SmartCtrl

SmartCtrl can be launched directly by running “**SmartCtrl.exe**”.

In case you have any difficulties during the installation process please contact Power Smart Control support:

support@powersmartcontrol.com